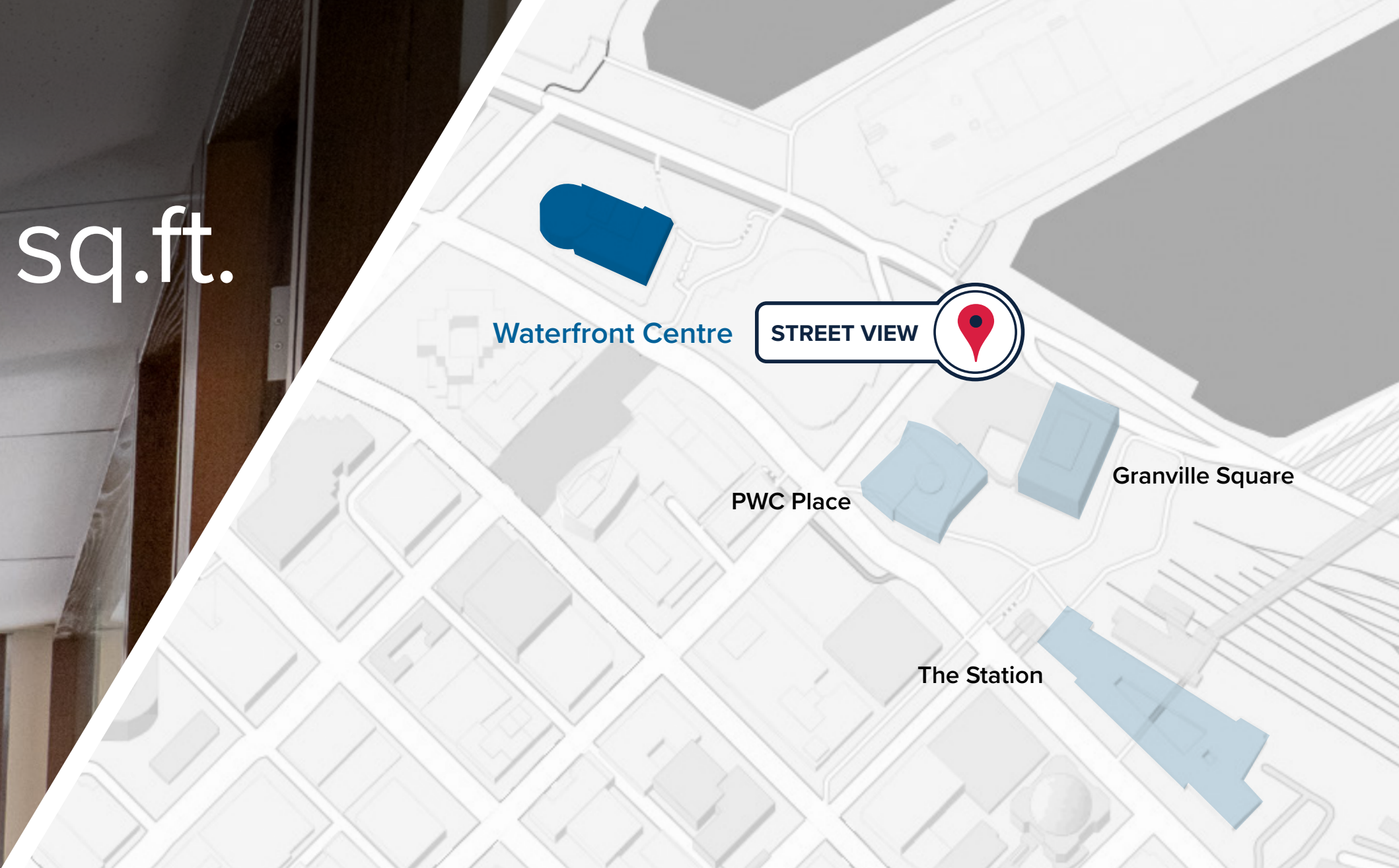


Waterfront Centre
200 Burrard Street

Suite 650 / 6,389 sq.ft.



VIRTUAL TOUR



CF | Meet you there

Lou Ficocelli
Vice President, Leasing
604-630-5307
lou.ficocelli@cadillacfairview.com

Carson Pennock
Senior Director, Leasing
604-630-5305
carson.pennock@cadillacfairview.com

Waterfront Centre

200 Burrard Street

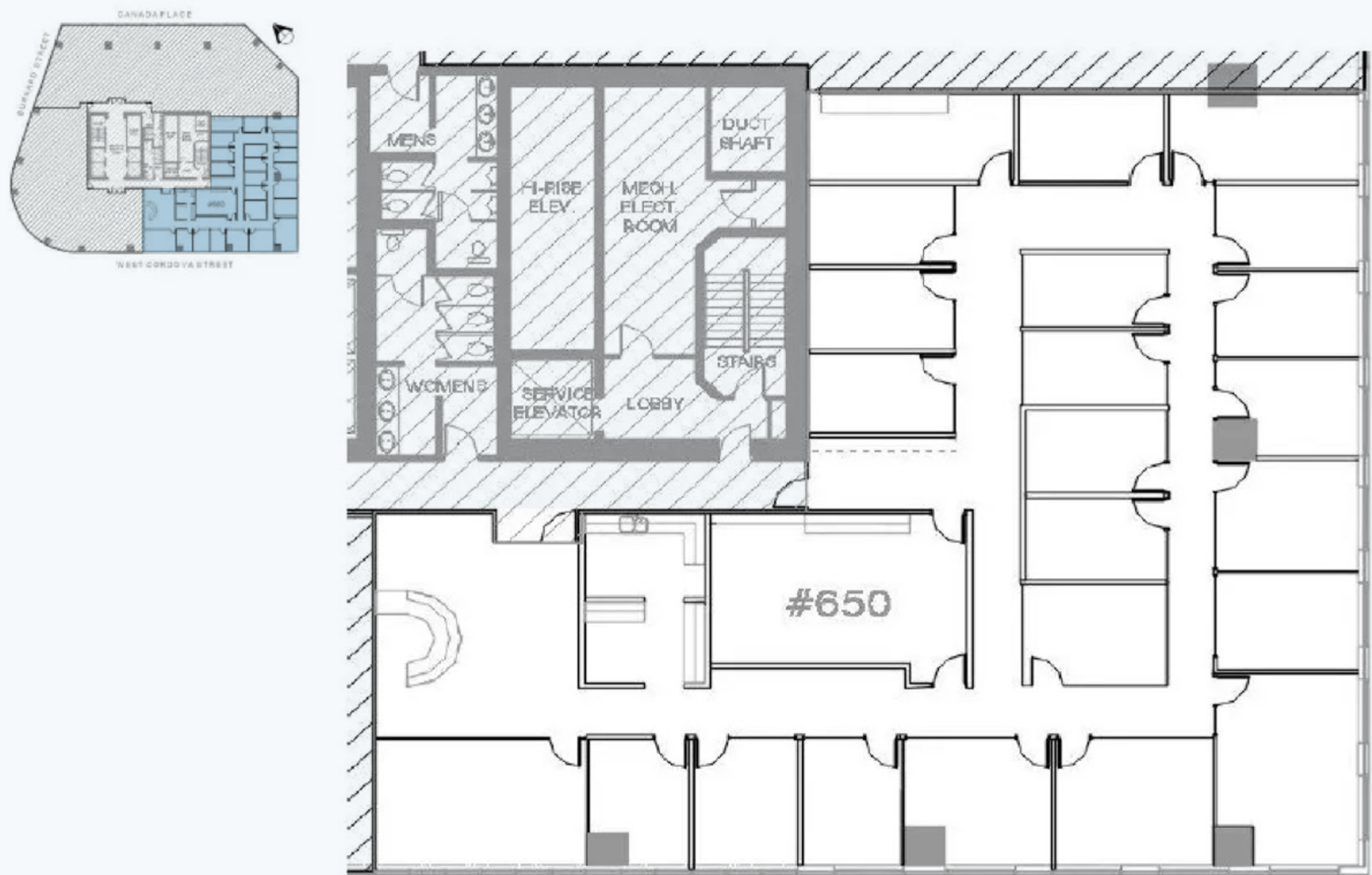
Suite 650 / 6,389 sq.ft.

Waterfront Centre is a unique Vancouver landmark
Centrally located at the corner of Burrard and Cordova Street, across from the Vancouver Convention Centre and the Pan Pacific Hotel. Offering breathtaking views of Vancouver's waterfront and dramatic seawall, this Class AAA office tower comprises 21 floors of prime office space atop of vibrant food offerings, direct connectors to the Fairmont Waterfront Hotel, Canada Place, and Sinclair Centre.

[see all available vacancies](#)

Improced with 12 exterior offices, interior offices and meeting rooms, boardroom, reception and kitchen.

Additional Rent (2025 Estimates): \$29.70 sq.ft.



Amenities

Electric Car Charging Station
200 Burrard on the P2 level and the Tesla Superchargers are located on the P3 level. 250 Howe and 200 Granville parkade on the P2 level.

Bike Storage
Ample and secure storage located on the parkade levels of the buildings.

CF Fitness Centre
At 200 Burrard and 250 Howe, there are exclusive fitness centres that feature top of the line equipment.

Transit
At the heart of Waterfront Properties is the Station which is the terminus station of the Canada Line, West Coast Express, Expo Line and Seabus.

Tenant Conference Centres
For the exclusive use of tenants, there are three conference centres available for booking.

- ★ Iconic design
- ★ Unparalleled location
- ★ First class property management
- ★ Electric car charging stations
- ★ Excellent on-site & area amenities



CF | Meet you there

Lou Ficocelli
Vice President, Leasing
604-630-5307
lou.ficocelli@cadillacfairview.com

Carson Pennock
Senior Director, Leasing
604-630-5305
carson.pennock@cadillacfairview.com