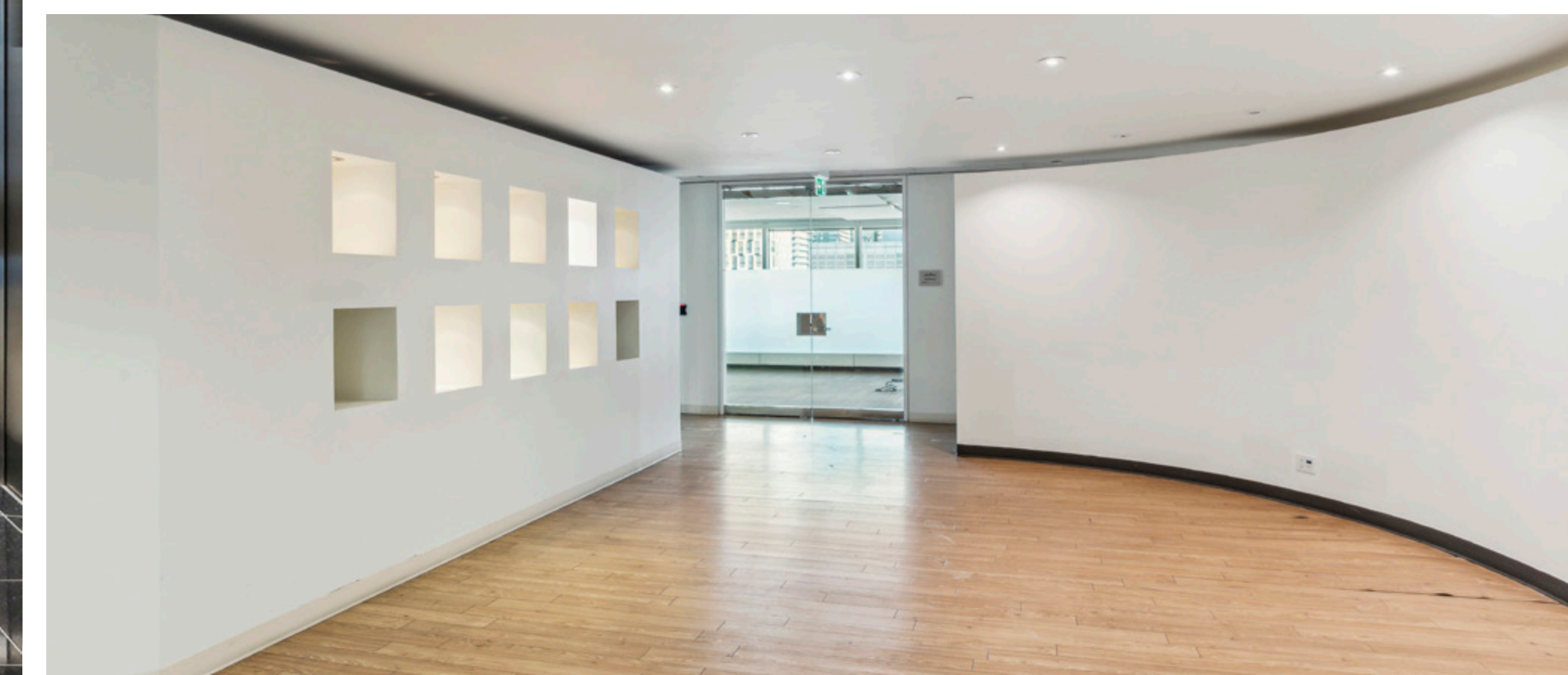
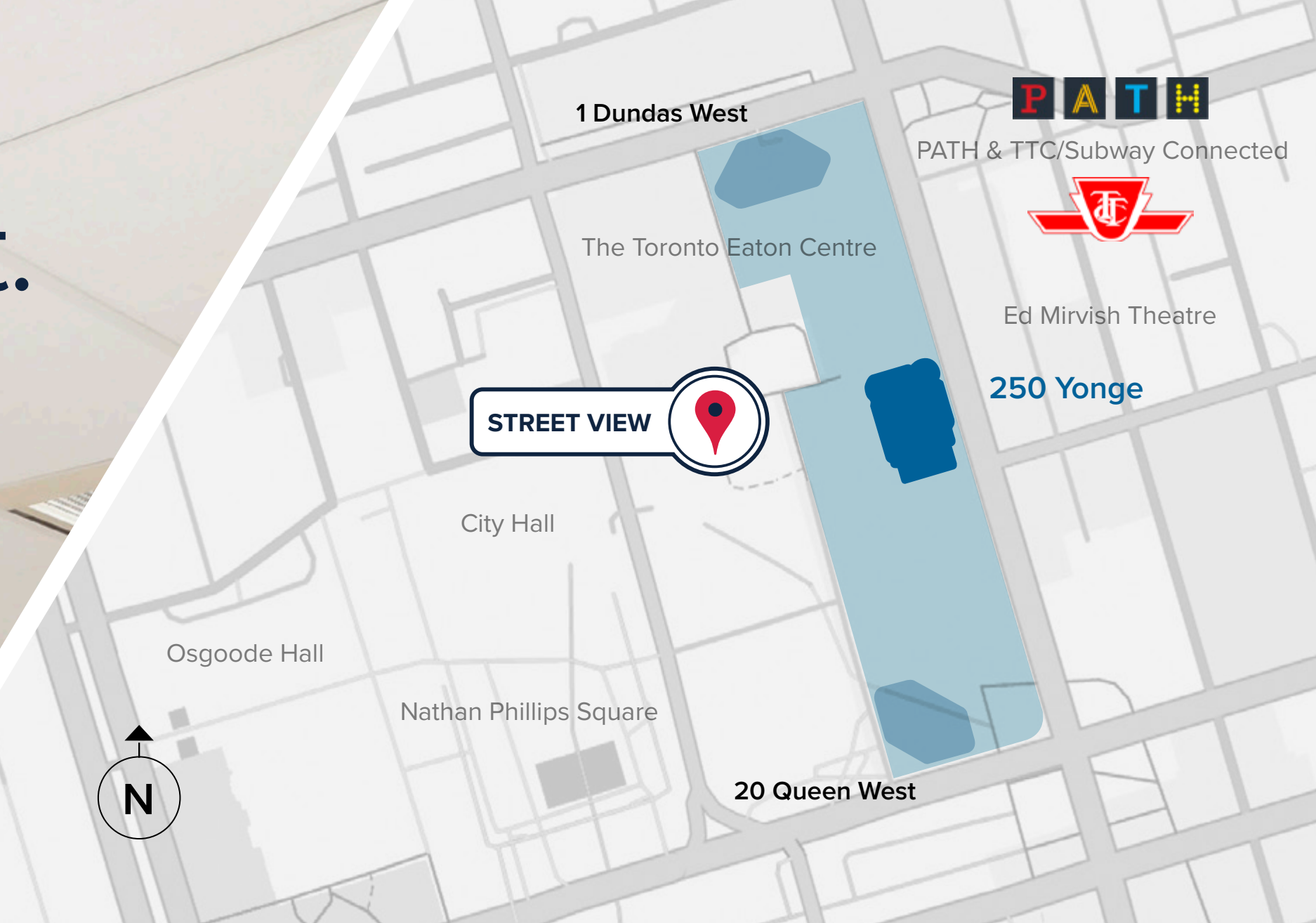


The Toronto Eaton Centre
250 Yonge / **Suite 1602** / 8,024 sq.ft.



CF | Meet you **there**

Lawrence Barrett
Senior Director, Leasing

(416) 400-0225
lawrence.barrett@cadillacfairview.com

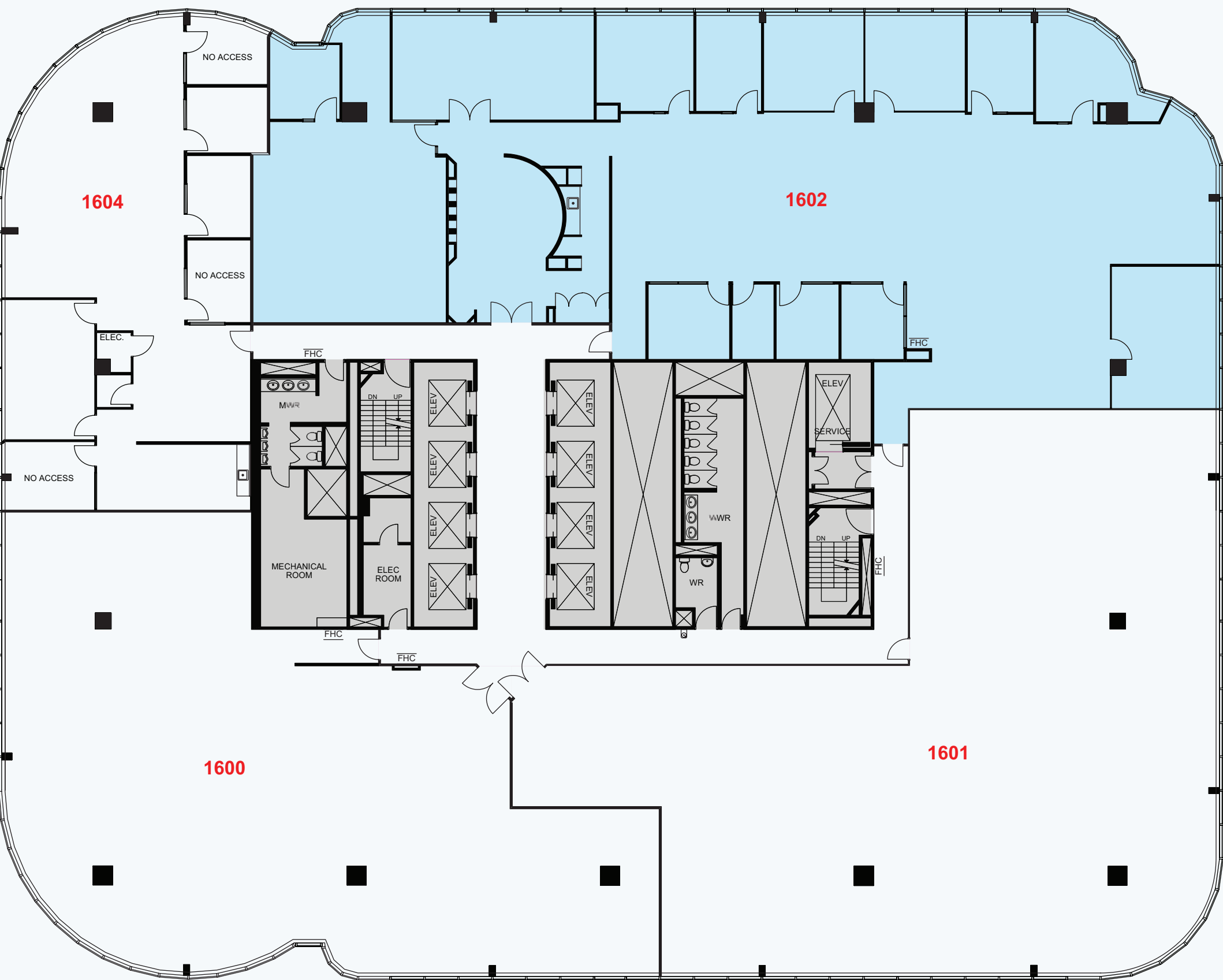
The Toronto Eaton Centre

250 Yonge

Suite 1602

8,024 sq.ft.

Suite 1602 is a prime office space that combines functionality with style, offering elevator exposure and breathtaking urban views. This thoughtfully designed suite features open and flexible hybrid workstations, several private offices, conference rooms, and a modern kitchenette.



Net Rent: Starting at \$27.50 sq.ft.

Net & Additional Rent: (2025 Estimates)

Realty Taxes:	\$8.10 sq.ft.
Operating Costs:	\$17.90 sq.ft.
Utilities:	\$1.30 sq.ft.

Unreserved Parking: \$367.25 per month/permit

Reserved Parking: \$474.60 per month/permit (*HST included)

Total Square Feet of Space	Typical Floor Size	Number of Floors
714,000 sq. ft.	23,000 sq. ft.	35

A Dynamic Destination

250 Yonge stands in the heart of downtown Toronto, atop CF Toronto Eaton Centre, the city's premier shopping destination. This 35-storey tower boasts 23,000-square-foot open floor plates, state-of-the-art technology, abundant natural light, and exceptional finishes. It's where Toronto's vibrant business and cultural communities all come together.

PATH

[View all available vacancies](#)

- ★ Direct PATH and subway access with a Transit Score of 100 and Walk Score of 97
 - ★ Highly accessible for drivers, cyclists, transit users and pedestrians
 - ★ First class property management services
- ★ Direct access to world-class retail, restaurants and entertainment
 - ★ Close proximity to hotels, meeting facilities, and event spaces
 - ★ Convenient on-site childcare facility

WELL
Health-Safety
Rating 2024

LEED
EB:O&M
Gold 2023

BOMA
BEST
Gold 2022

RICK HANSEN
FOUNDATION
Accessibility 2022



CF | Meet you there

Lawrence Barrett

Senior Director, Leasing

(416) 400-0225

lawrence.barrett@cadillacfairview.com