

**Pacific Centre**  
750 West Pender Street

**Suite 700** / 3,775 sq.ft.

750 W. Pender Street

STREET VIEW



885 W. Georgia Street

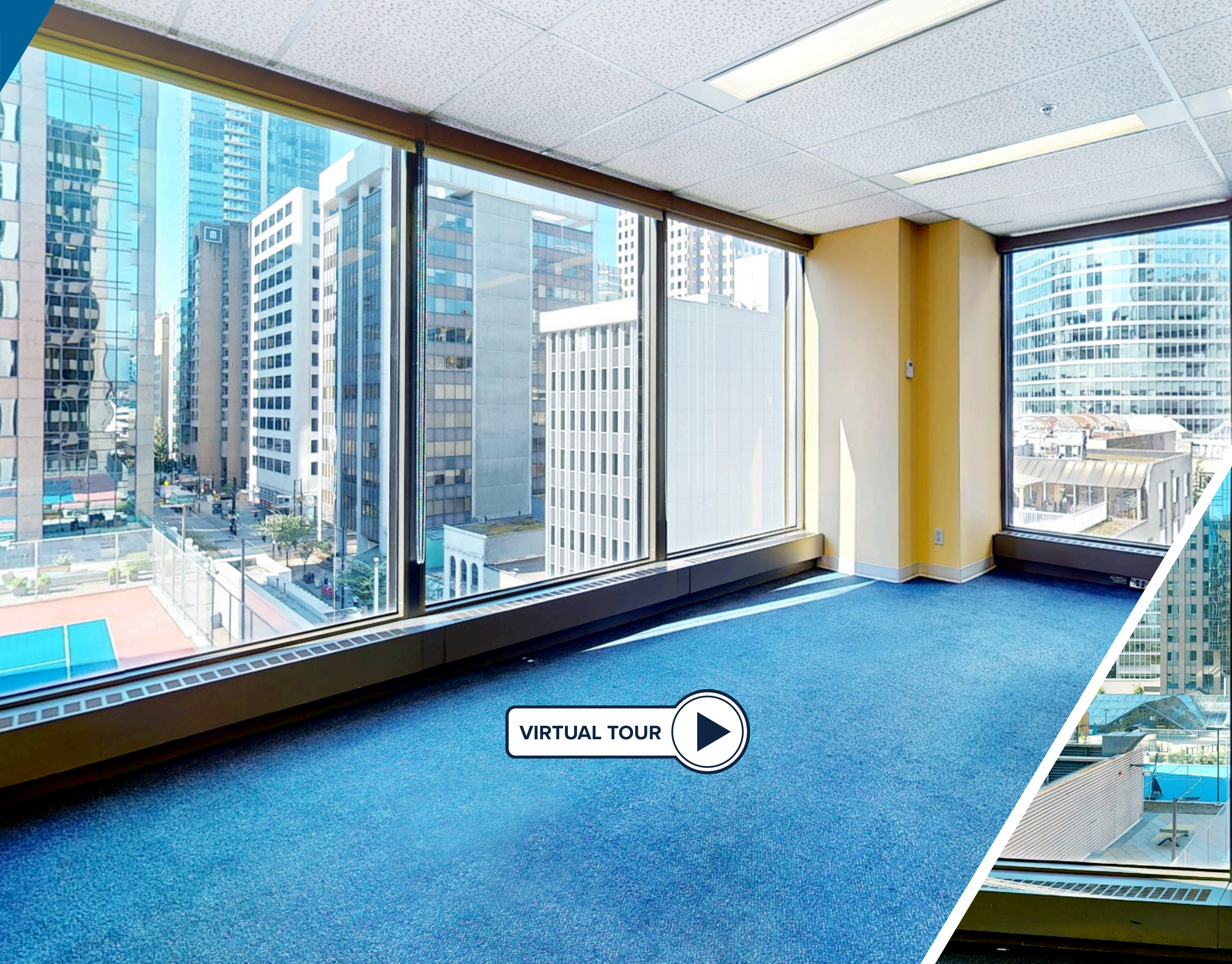
701 W. Georgia Street

700 W. Georgia Street

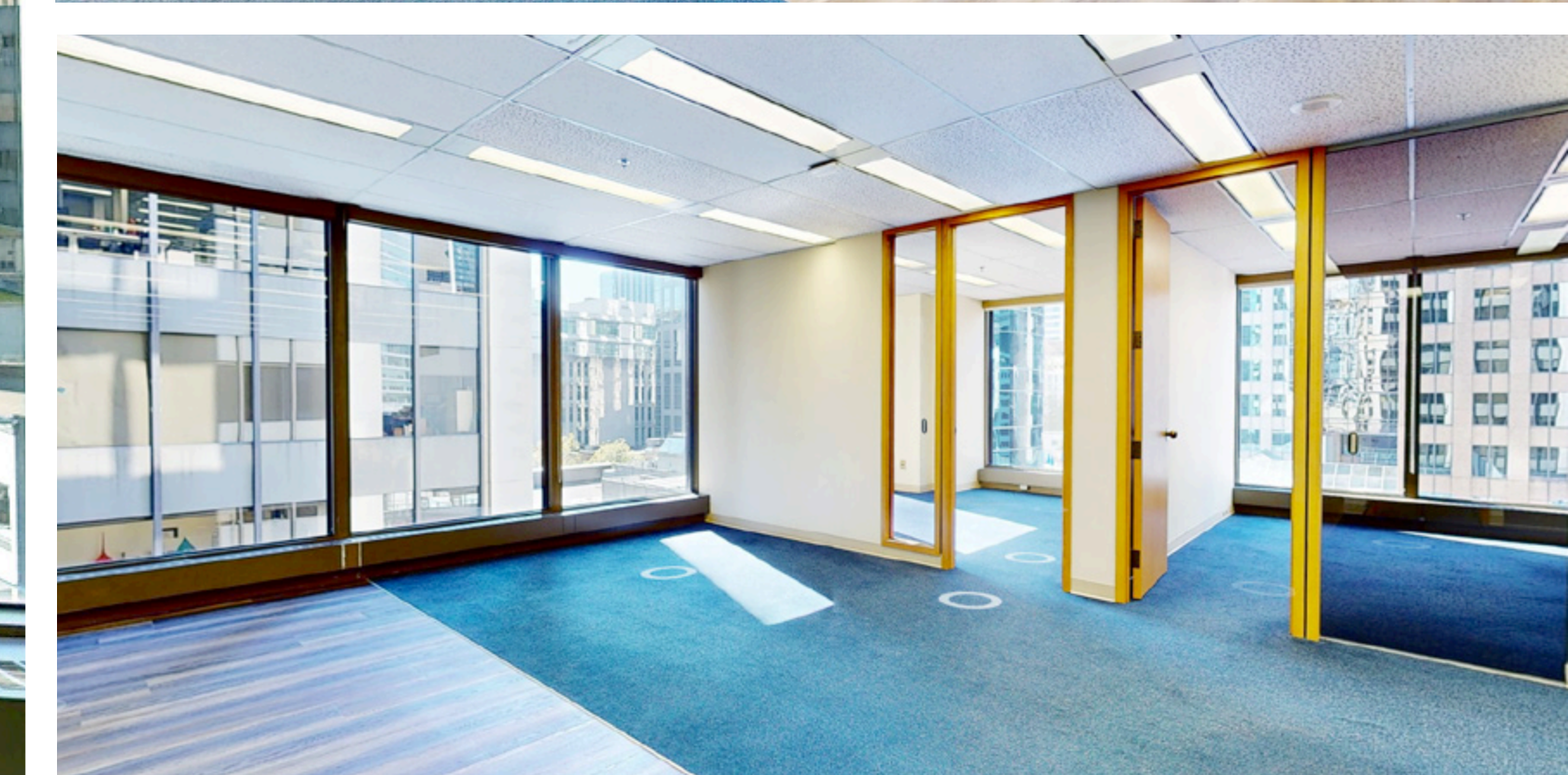
725 Granville Street

777 Dunsmuir Street

609 Granville Street



VIRTUAL TOUR



**CF** | Meet you there

**Lou Ficocelli**  
Vice President, Leasing  
604-630-5307  
lou.ficocelli@cadillacfairview.com

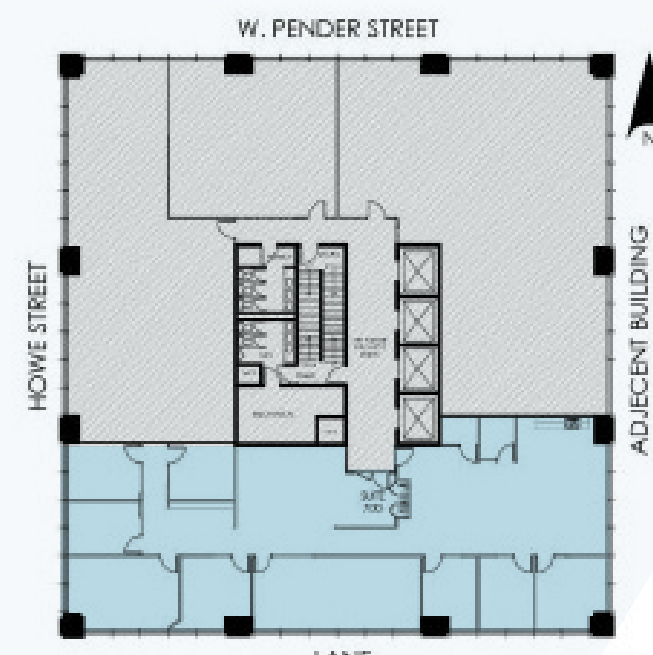
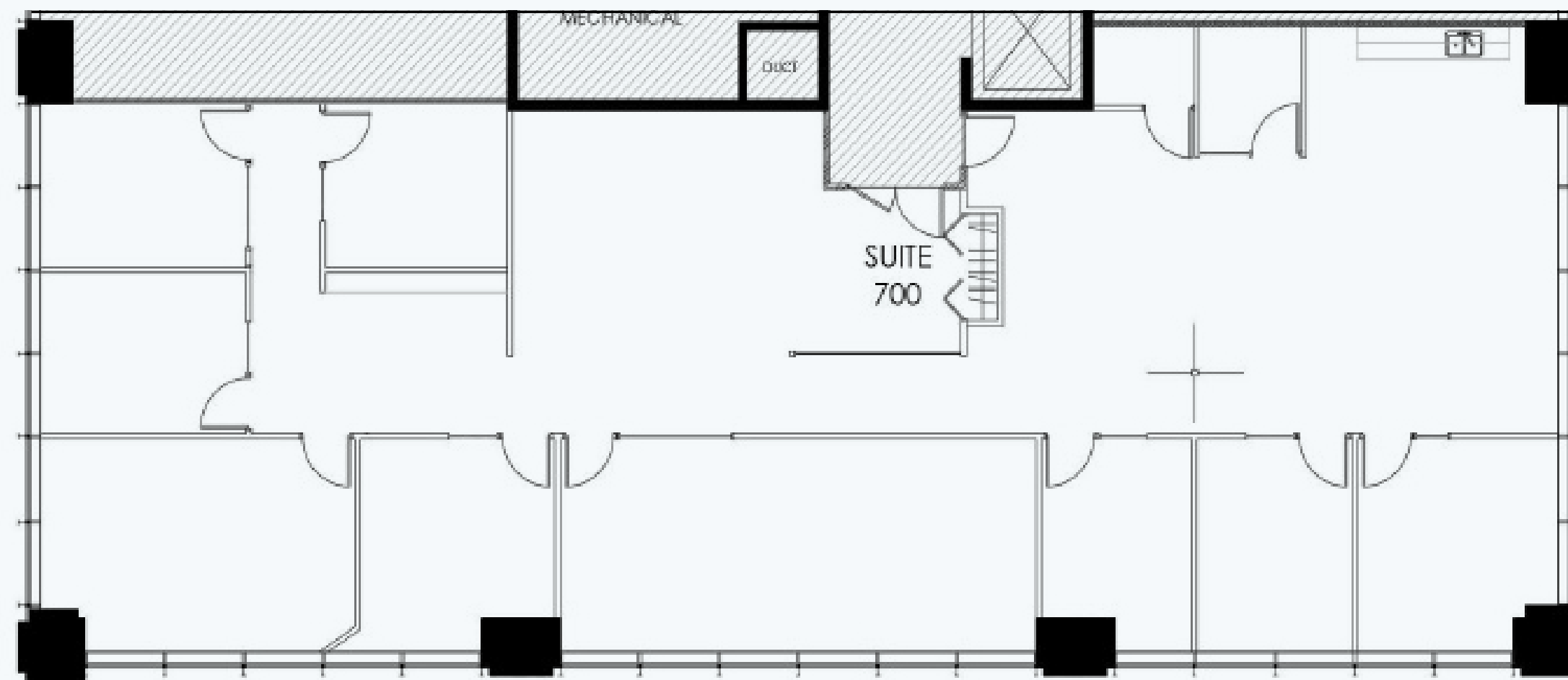
**Carson Pennock**  
Senior Director, Leasing  
604-630-5305  
carson.pennock@cadillacfairview.com

# Pacific Centre

750 West Pender Street / **Suite 700** / 3,775 sq.ft.

At 3,775 sq.ft., Suite 700 puts you at the centre of all the action. Ample private offices, a kitchen and large boardroom overlooking CF Terrace, makes suite 700 the perfect mix of business and play.

**Additional Rent** (2024 Estimates): \$27.01 sq.ft.



### The Core Connection

750 West Pender is a 17-storey office building, connected to its sister building 700 West Pender by an instantly recognizable glass concourse which also connects the two towers to CF Pacific Centre. Access to the Centre's 140 shops and services, as well as a variety of food offerings steps away from the front door, promise numerous options – while the central location and proximity to transit accessible parking provide exceptional convenience.

[see all available vacancies](#)

### Amenities

#### Electric Car Charging Station

Conveniently located in 885 W Georgia in the P1 level.

#### Bike Storage

Ample and secure storage space located at 885 W Georgia in the P1 level.

#### Tenant Conference Centres

For the exclusive use of tenants, there are two conference centres available for booking that can accommodate up to 60 people each.

#### CF Fitness Centre

An exclusive fitness centre located at 885 West Georgia, featuring top of the line fitness equipment.

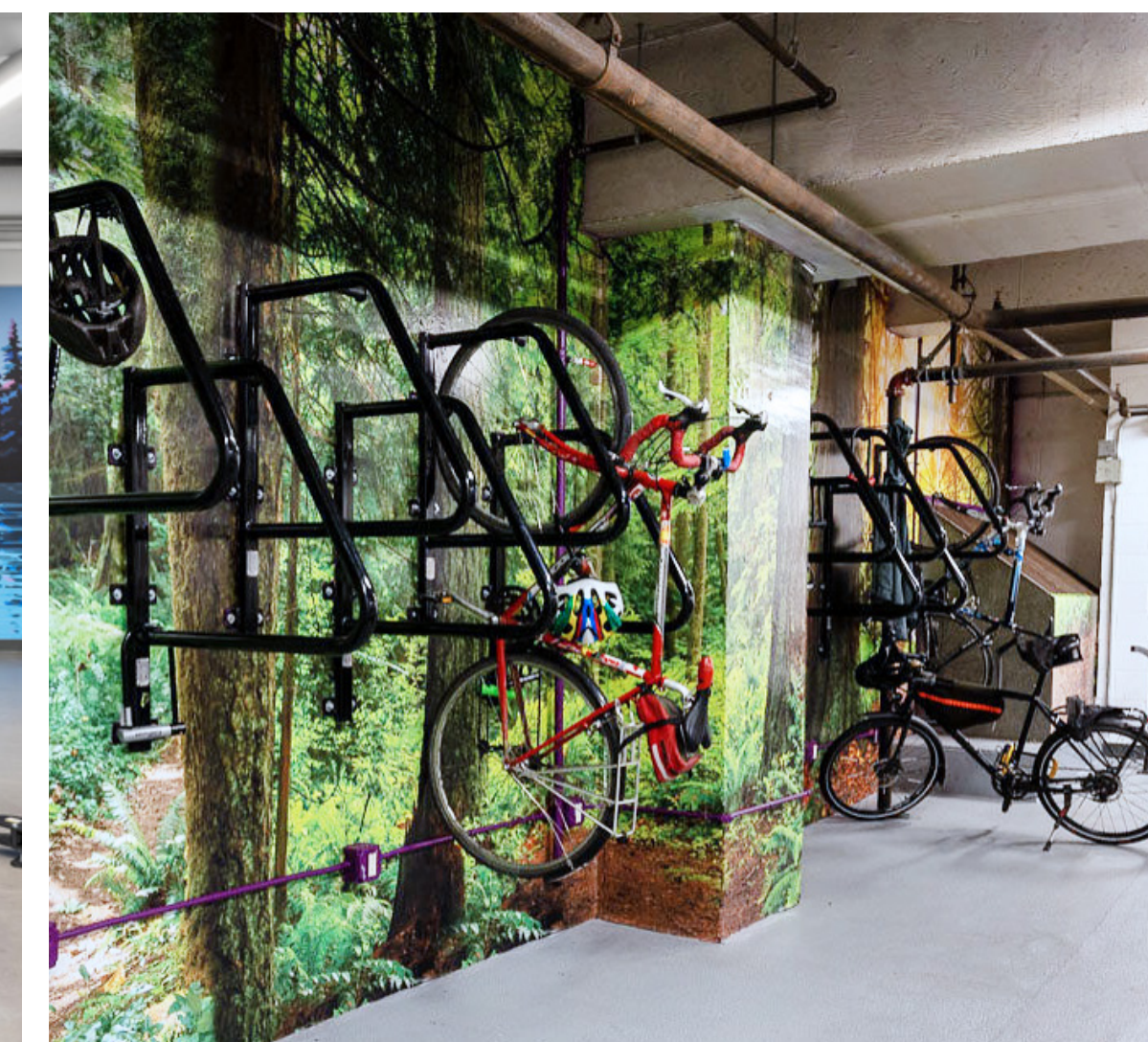
#### CF Terrace

The CF Terrace is a private rooftop amenity with seating that includes a large scale yoga mat, bocce court, tennis court, table tennis, and half basketball court. Tenants also have access to showers and lockers equipped with complimentary towel service.

#### CF Pacific Centre

Discover a world of convenience at CF Pacific Centre, where you'll find over 100 shops and services tailored to meet your every need.

- ★ Iconic design
- ★ First class property management
- ★ Electric car charging stations
- ★ Unparalleled location
- ★ Over 100+ shops and restaurants
- ★ Excellent on-site & area amenities



**CF** | Meet you there

**Lou Ficocelli**  
Vice President, Leasing  
604-630-5307  
lou.ficocelli@cadillacfairview.com

**Carson Pennock**  
Senior Director, Leasing  
604-630-5305  
carson.pennock@cadillacfairview.com