

Actual Views!

# Granville Centre

200 Granville Street

# Suite 2200

12,651 sq.ft.



**CF** | Meet you there

**Lou Ficocelli**  
Vice President, Leasing  
604-630-5307  
lou.ficocelli@cadillacfairview.com

**Carson Pennock**  
Senior Director, Leasing  
604-630-5305  
carson.pennock@cadillacfairview.com



Granville Centre

200 Granville Street

／

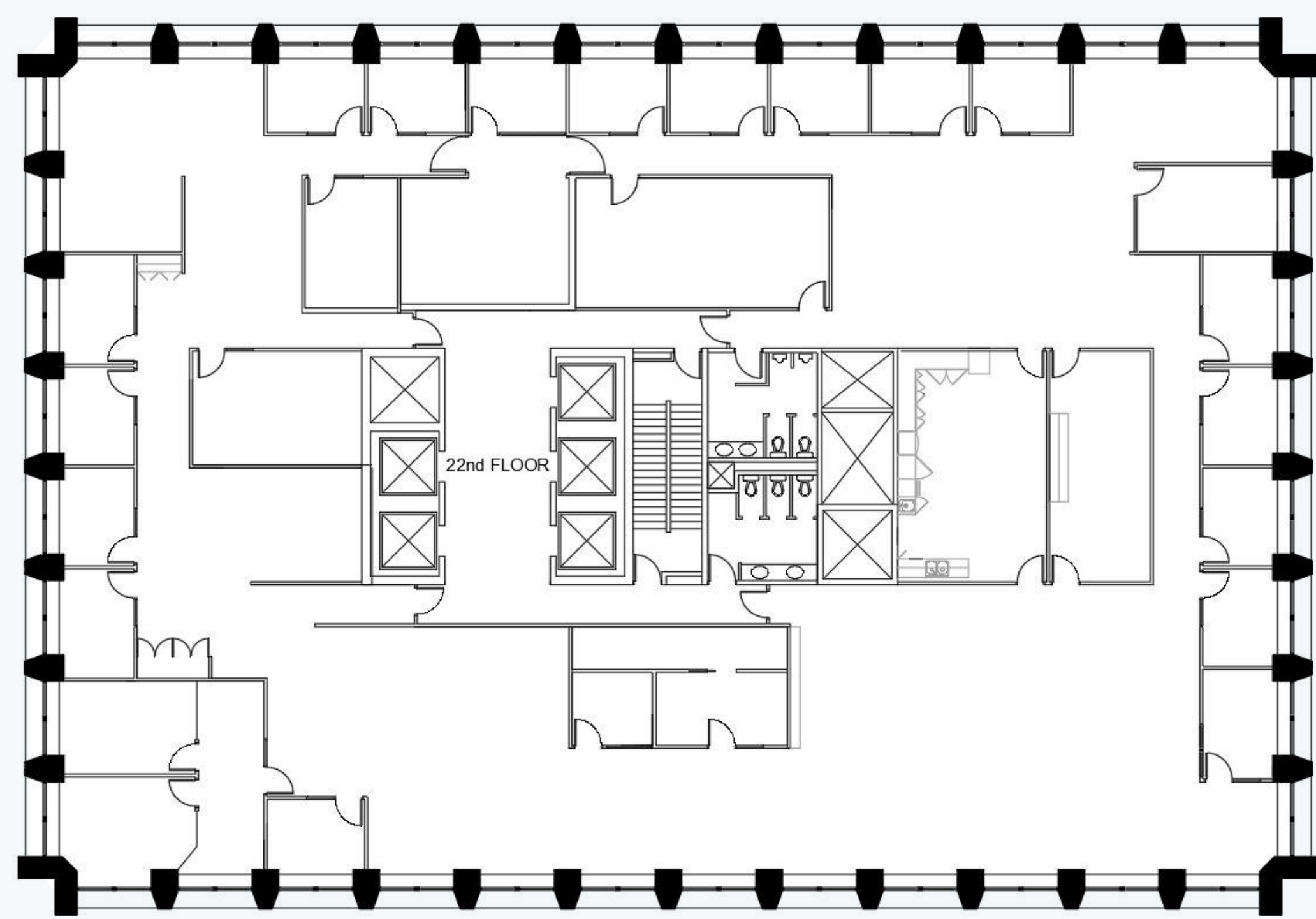
Suite 2200

／

12,651 sq.ft.

Views to the north!

Additional Rent (2025 Estimates): \$29.95 sq.ft.



Cityscape meets Waterfront

Rising 28 floors above downtown, this Class A building seamlessly blends 1973 charm with modern needs. Each floor offers top-quality space for creativity and collaboration, featuring sleek interiors and panoramic waterfront views. Step into a landscaped plaza, where lush greenery and a tranquil water feature provide the perfect break. With nearby conveniences like the Waterfront Centre Food Court, embrace a lifestyle that inspires and propels your success.

[see all available vacancies](#)

Amenities

Electric Car Charging Station

200 Burrard on the P2 level and the Tesla Superchargers are located on the P3 level. 250 Howe and 200 Granville parkade on the P2 level.

Bike Storage

Ample and secure storage located on the parkade levels of the buildings.

CF Fitness Centre

At 200 Burrard and 250 Howe, there are exclusive fitness centres that feature top of the line equipment.

Transit

At the heart of Waterfront Properties is the Station which is the terminus station of the Canada Line, West Coast Express, Expo Line and Seabus.

Tenant Conference Centres

For the exclusive use of tenants, there are three conference centres available for booking.

- ★ Iconic design
- ★ Unparalleled location
- ★ First class property management
- ★ Electric car charging stations
- ★ Excellent on-site & area amenities



CF | Meet you there

**Lou Ficocelli**  
Vice President, Leasing  
604-630-5307  
lou.ficocelli@cadillacfairview.com

**Carson Pennock**  
Senior Director, Leasing  
604-630-5305  
carson.pennock@cadillacfairview.com