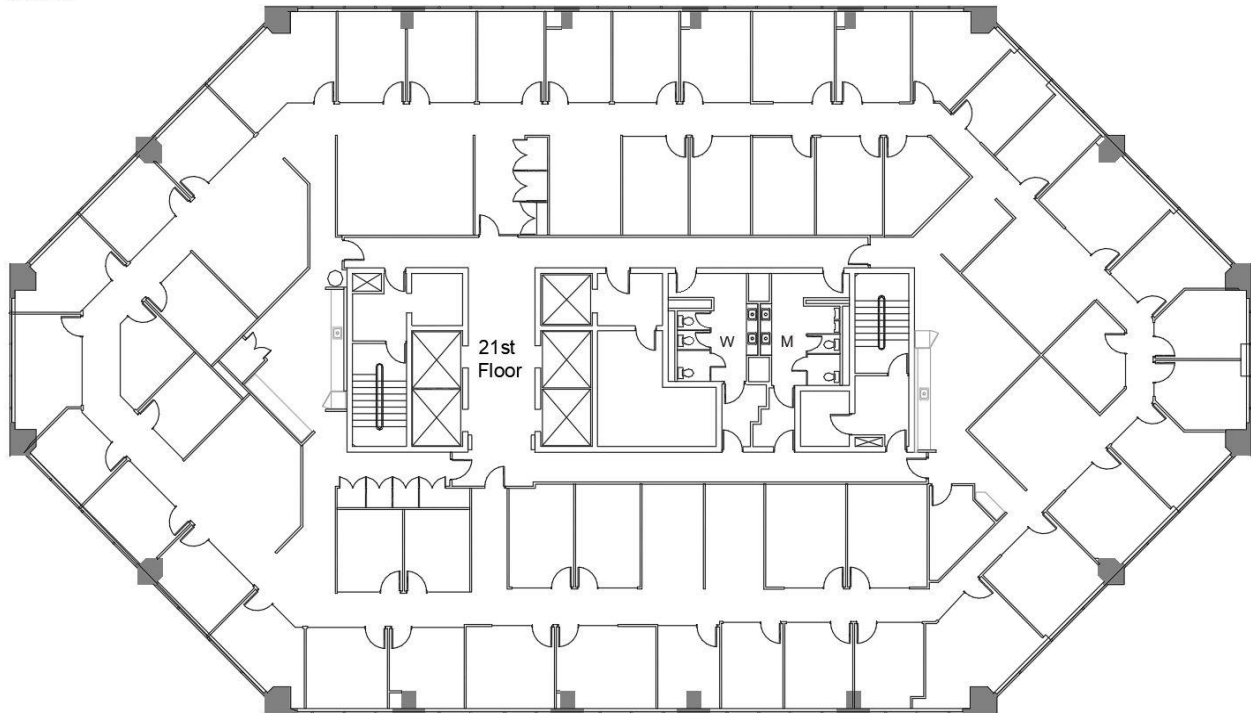
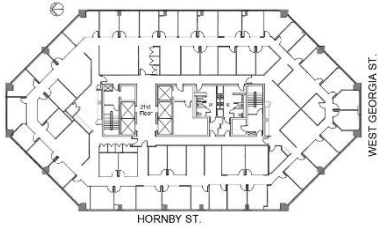


# 885 West Georgia

RBC Place



## SUITE 2100

**16,305 square feet**

Fully improved premises with exterior and interior offices, meeting rooms and kitchen areas.  
Contiguous to Suite 2200 for an additional 13,294 sf.

For more information please contact:

**Lou Ficocelli**

Vice President, Leasing

604 • 630 • 5307

[lou.ficocelli@cadillacfairview.com](mailto:lou.ficocelli@cadillacfairview.com)

**Carson Pennock**

Senior Director, Leasing

604 • 630 • 5305

[carson.pennock@cadillacfairview.com](mailto:carson.pennock@cadillacfairview.com)