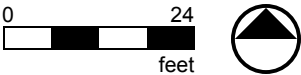
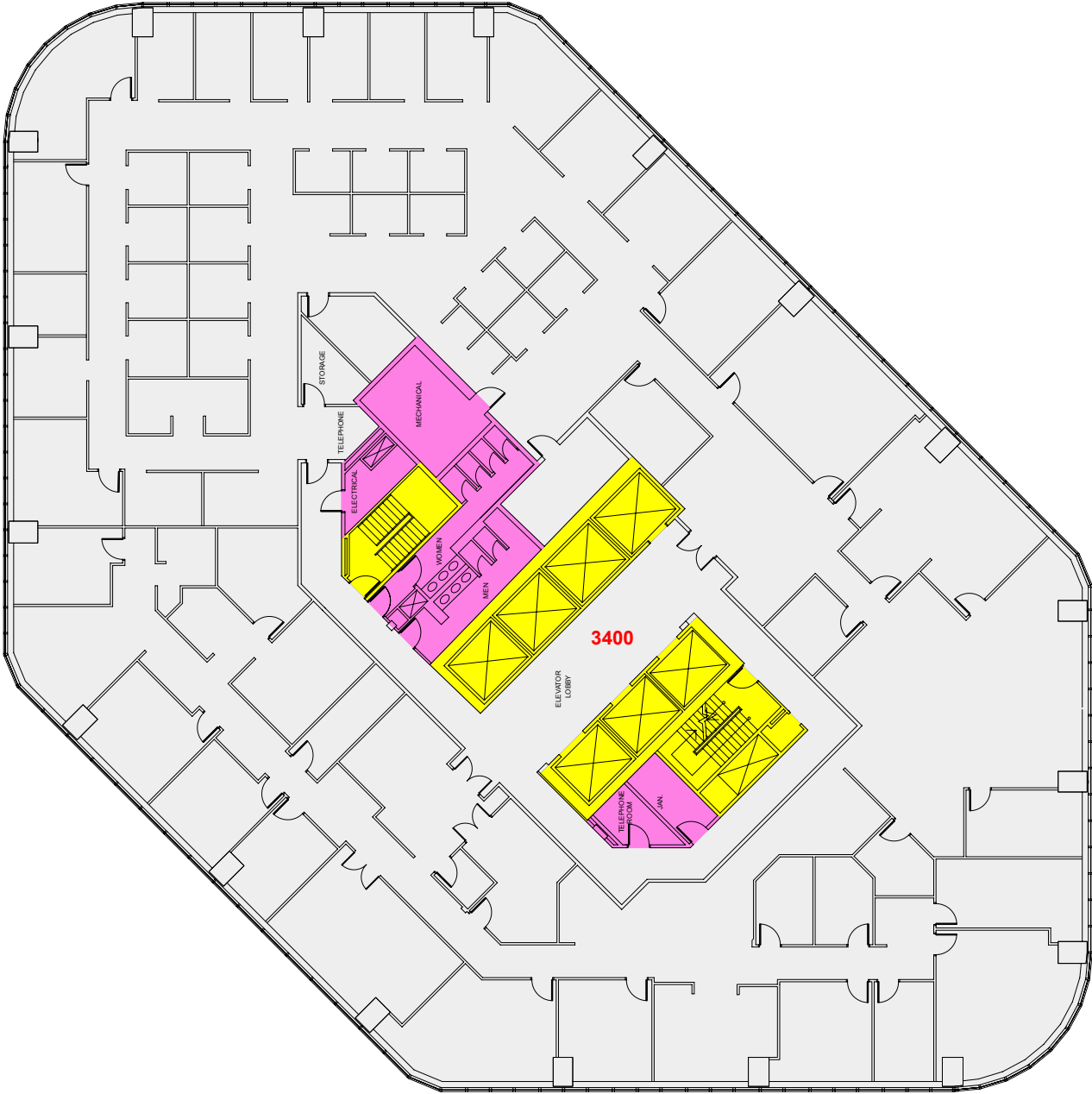


Tenant Usable Area

Floor Common Area

Major Vertical Penetration



Client: The Cadillac Fairview Corporation Limited



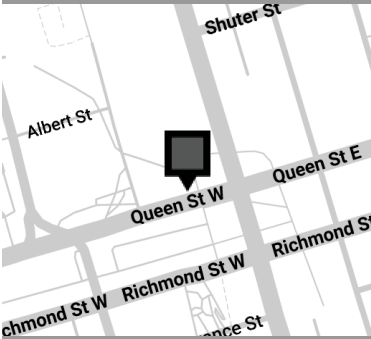
Cadillac  
Fairview

Version	Created: 12/08/2025
<b>FP1A</b>	Measured: N/A

20 Queen Street West  
Toronto, Ontario, Canada

**Floor 34**

*Please refer to corresponding  
BOMA Office 1980 Area Chart:  
20queen-b80-7a.pdf*



This work product has been prepared by Extreme Measures Inc. pursuant to a contract with the Client for the sole benefit of and use by the Client. No third party may rely on this work product without the receipt of a reliance letter from Extreme Measures Inc.

This work product or portions thereof relies upon information provided by the Client and/or from third parties introduced by the Client that has not been independently verified by Extreme Measures Inc. Extreme Measures Inc. is not liable for any errors, omissions or inaccuracies that may result from such information.