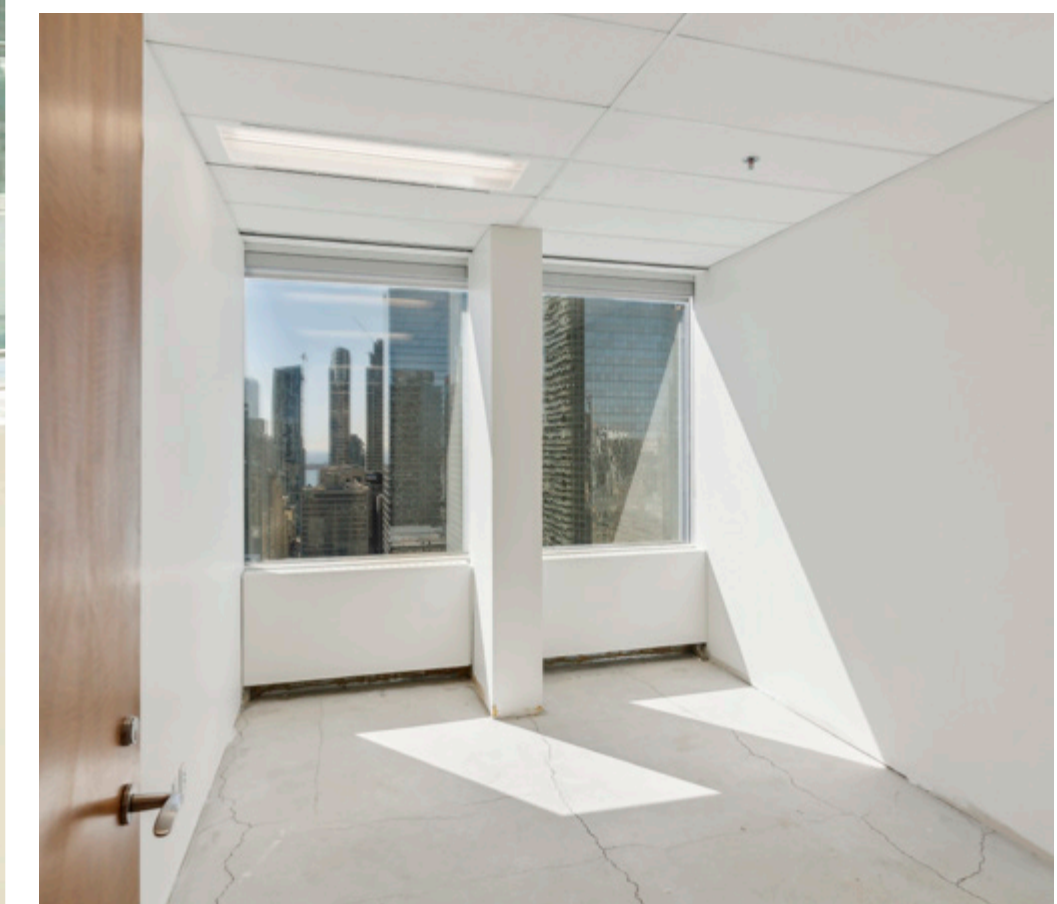
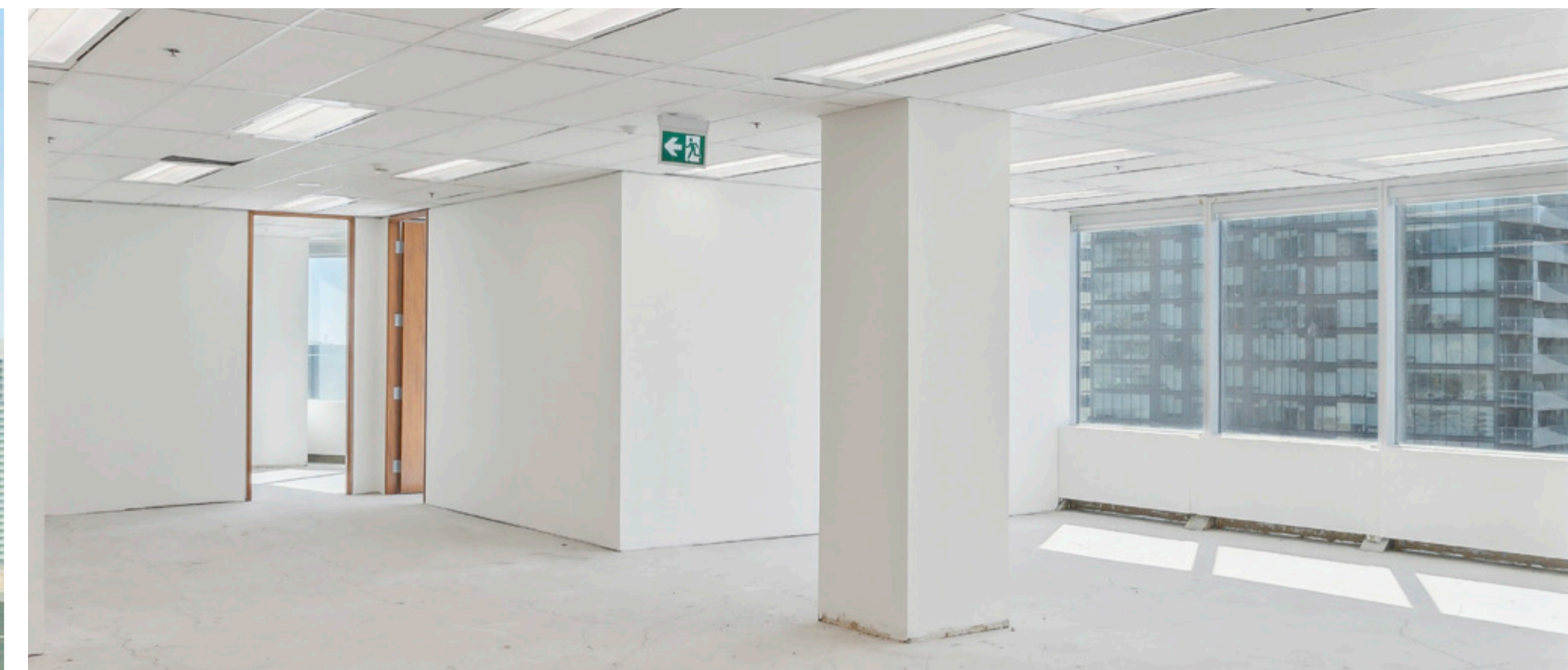
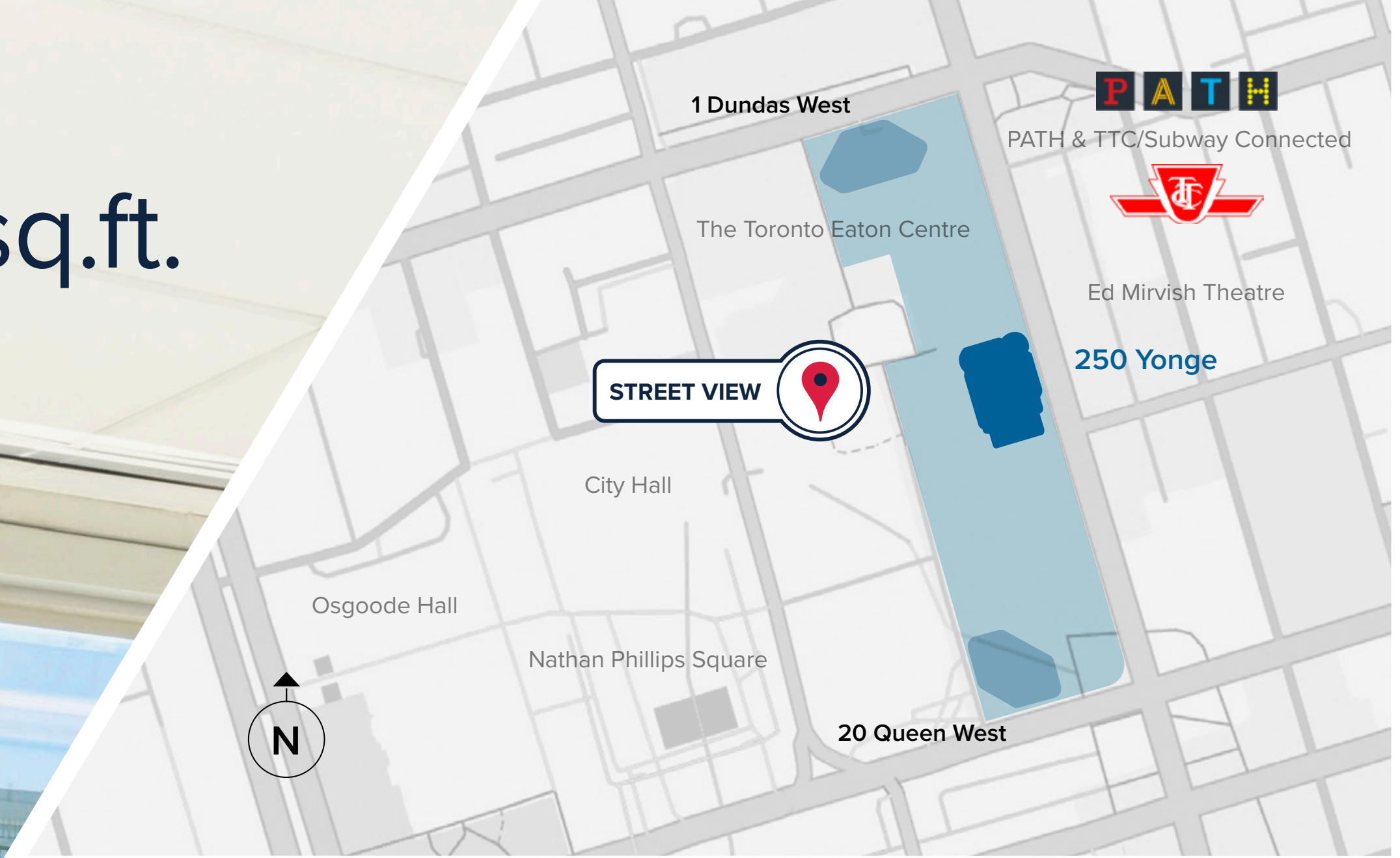


CF Toronto Eaton Centre
250 Yonge / **Suite 2202** / 2,349 sq.ft.



Actual Views!

CF | Meet you **there**

Dean Willmott
Director, Office Leasing

(416) 575 4244
dean.willmott@cadillacfairview.com

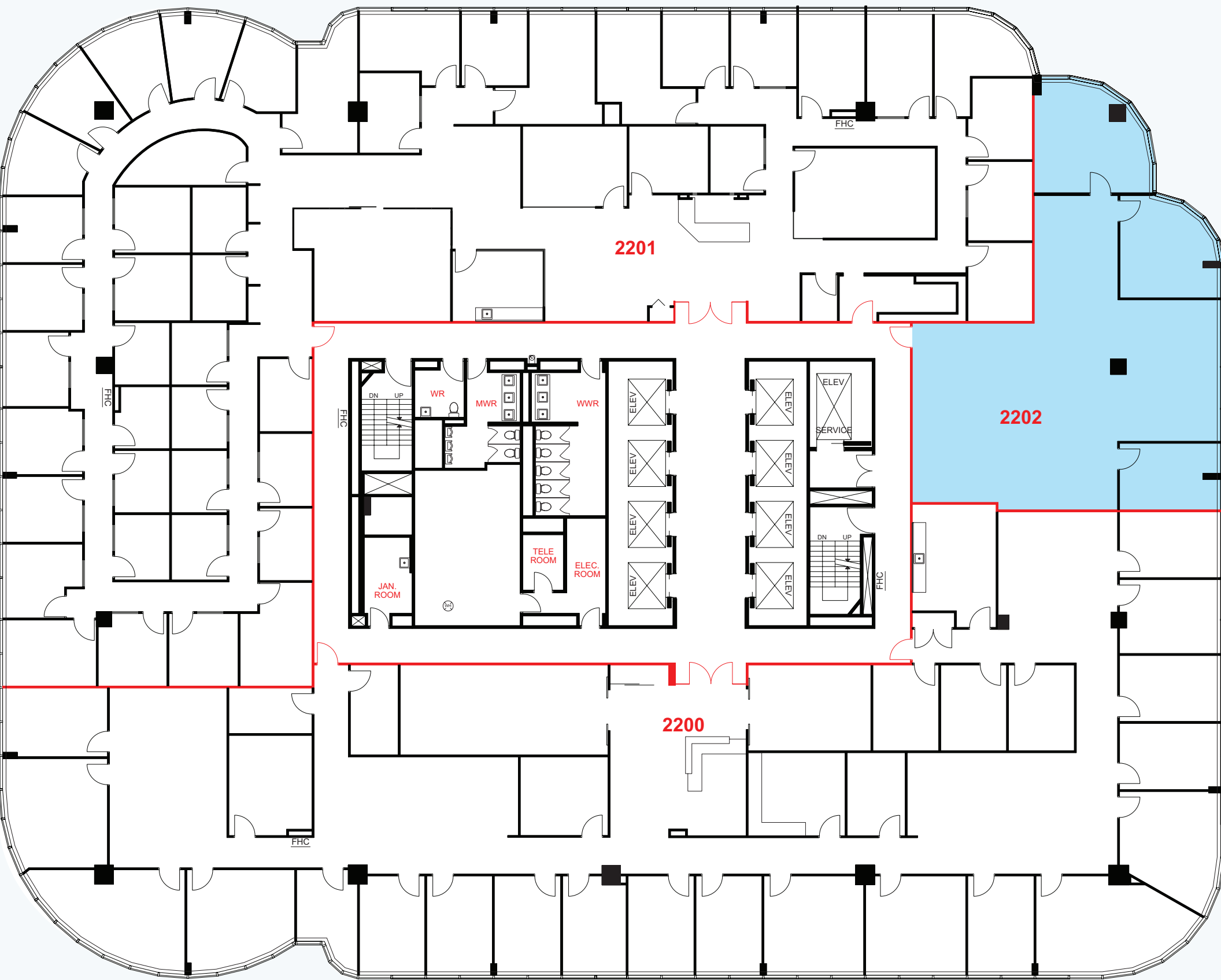
CF Toronto Eaton Centre

250 Yonge

Suite 2202

2,349 sq.ft.

One of Suite 2202’s standout features is its prime corner-unit orientation, offering stunning lake views. The space is efficiently designed with a balanced mix of private offices and open work areas, making it both functional and inspiring.



Net Rent: Please contact listing agent

Net & Additional Rent: (2025 Estimates)

Realty Taxes: \$8.10 sq.ft.

Operating Costs: \$17.90 sq.ft.

Utilities: \$1.30 sq.ft.

Unreserved Parking: \$367.25 per month/permit

Reserved Parking: \$474.60 per month/permit
(*HST included)

Total Square Feet of Space
714,000 sq. ft.

Typical Floor Size
23,000 sq. ft.

Number of Floors
35

A Dynamic Destination

250 Yonge stands in the heart of downtown Toronto, atop CF Toronto Eaton Centre, the city’s premier shopping destination. This 35-storey tower boasts 23,000-square-foot open floor plates, state-of-the-art technology, abundant natural light, and exceptional finishes. It’s where Toronto’s vibrant business and cultural communities all come together.



[View all available vacancies](#)

- ★ **Direct PATH and subway access with a Transit Score of 100 and Walk Score of 97**
- ★ **Highly accessible for drivers, cyclists, transit users and pedestrians**
- ★ **First class property management services**

- ★ **Direct access to world-class retail, restaurants and entertainment**
- ★ **Close proximity to hotels, meeting facilities, and event spaces**
- ★ **Convenient on-site childcare facility**



WELL
Health-Safety
Rating 2024



LEED
EB:O&M
Gold 2023



BOMA
BEST
Gold 2022



RICK HANSEN
FOUNDATION
Accessibility 2022



CF | Meet you **there**

Dean Willmott
Director, Office Leasing

(416) 575 4244
dean.willmott@cadillacfairview.com