

The Toronto Eaton Centre  
**20 Queen West** / **Suite 602** / 7,697 sq.ft.



**CF** | Meet you there

**Lawrence Barrett**  
Senior Director, Leasing

(416) 400-0225  
lawrence.barrett@cadillacfairview.com

The Toronto Eaton Centre

20 Queen West / Suite 602 / 7,697 sq.ft.

Suite 602 is designed for productivity, featuring over 10 private offices, expansive open work areas, and a distinctive boardroom. A spacious kitchen and inviting common area complete this flexible and efficient office environment.

Net Rent: Starting at \$29.50 sq.ft.

Net & Additional Rent: (2025 Estimates)

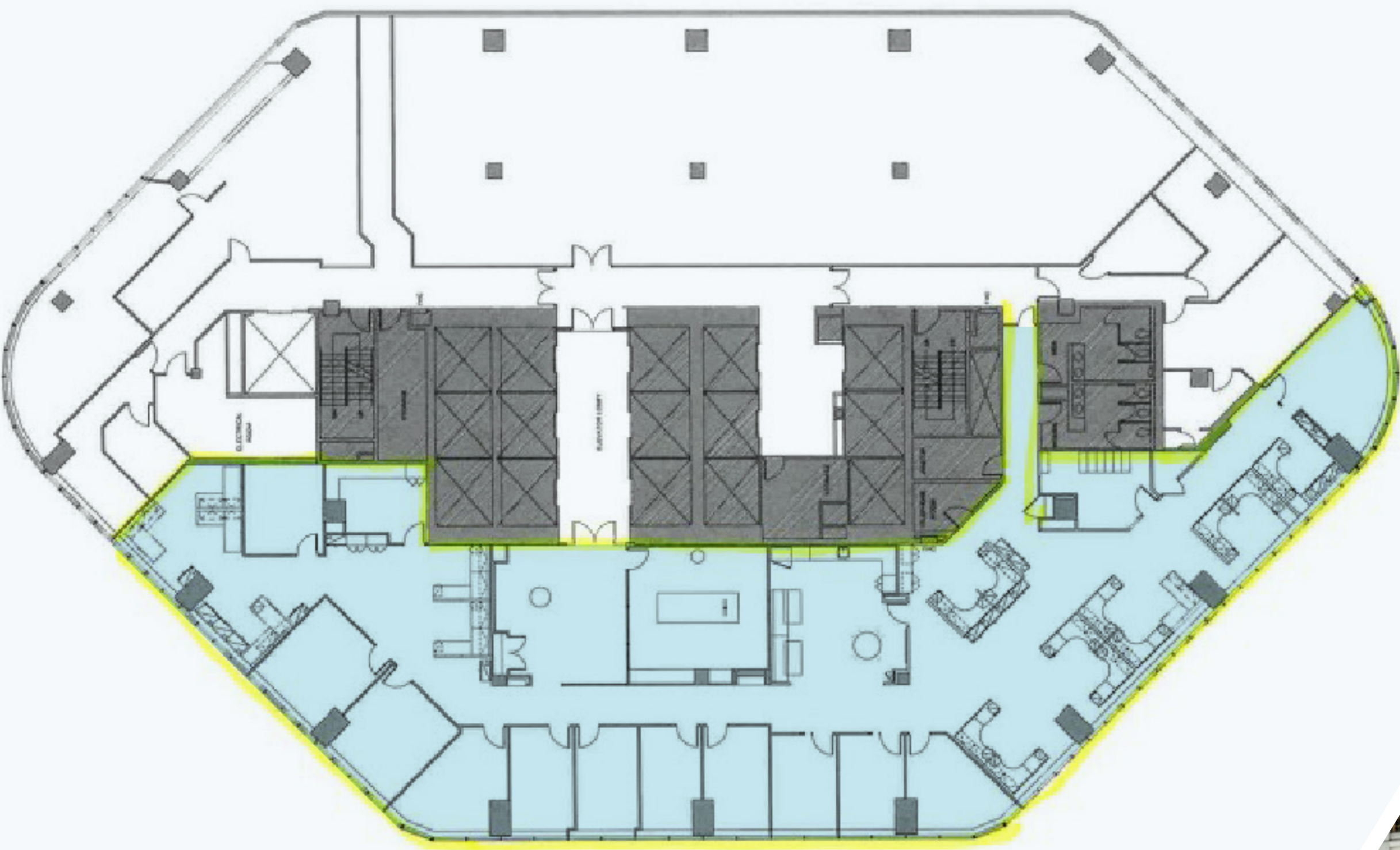
Realty Taxes: \$8.05 sq.ft.

Operating Costs: \$17.50 sq.ft.

Utilities: \$1.30 sq.ft.

Unreserved Parking: \$367.25 per month/permit

Reserved Parking: \$474.60 per month/permit (\*HST included)



Total Square Feet of Space

674,000 sq. ft.

Typical Floor Size

18,250 sq. ft.

Number of Floors

36

Embrace Vibrancy

Discover the pulse of downtown Toronto at 20 Queen West—a prestigious 36-storey Class A tower seamlessly connected to CF Toronto Eaton Centre and the PATH system. Blending modern sophistication with historic charm alongside Old City Hall, this prime address is home to Cadillac Fairview’s corporate offices and places tenants at the center of the city’s vibrant business and cultural scene.

PATH

View all available vacancies

- ★ Direct PATH and subway access with a Transit Score of 100 and Walk Score of 97

★ Highly accessible for drivers, cyclists, transit users and pedestrians

★ First class property management services
- ★ Direct access to world-class retail, restaurants and entertainment

★ Close proximity to hotels, meeting facilities, and event spaces

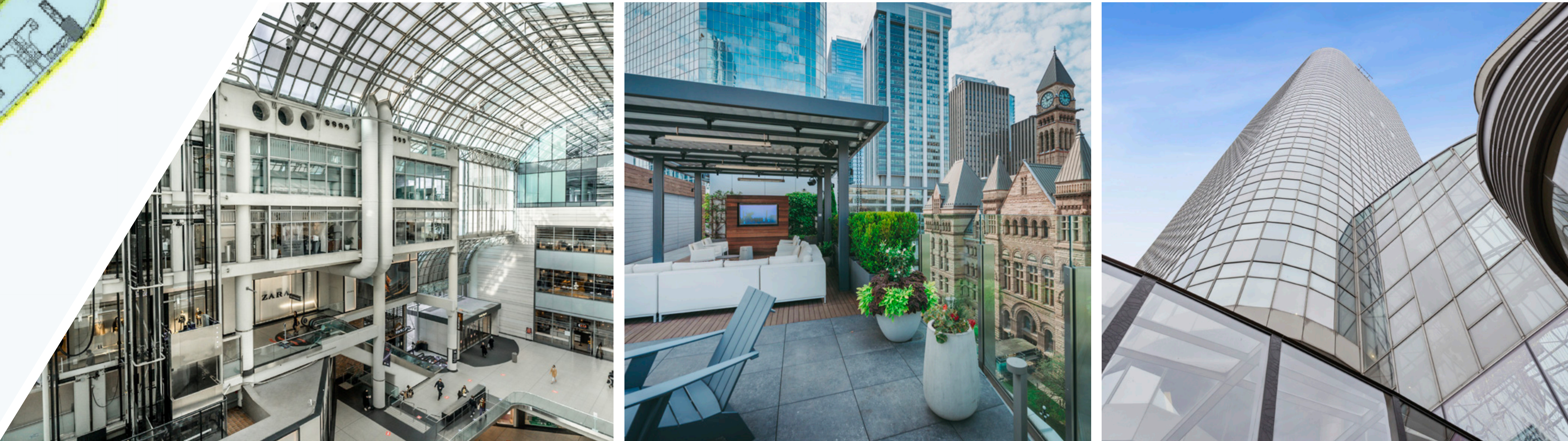
★ Convenient on-site childcare facility

WELL Health-Safety Rating 2024

LEED EB:O&M Gold 2023

BOMA BEST Gold 2022

RICK HANSEN FOUNDATION Accessibility 2022



CF | Meet you **there**

Lawrence Barrett  
Senior Director, Leasing

(416) 400-0225  
lawrence.barrett@cadillacfairview.com