

KEY PLAN

UNIT# 1801

FLOOR: 18

THE UNIT DEPICTED ABOVE HAS BEEN MEASURED IN ACCORDANCE WITH STANDARDS OF AREA MEASUREMENT AS DEFINED FOR THE BOMA RENTABLE AREA UNDER THE TERMS OF THE CADILLAC FAIRVIEW CORPORATION LIMITED STANDARD FORM LEASE, WITHIN THE LIMITS OF ACCURACY IMPOSED BY SITE CONDITIONS.

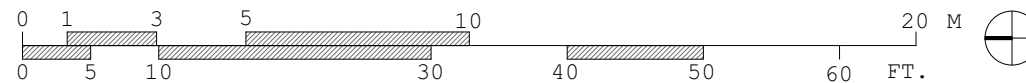
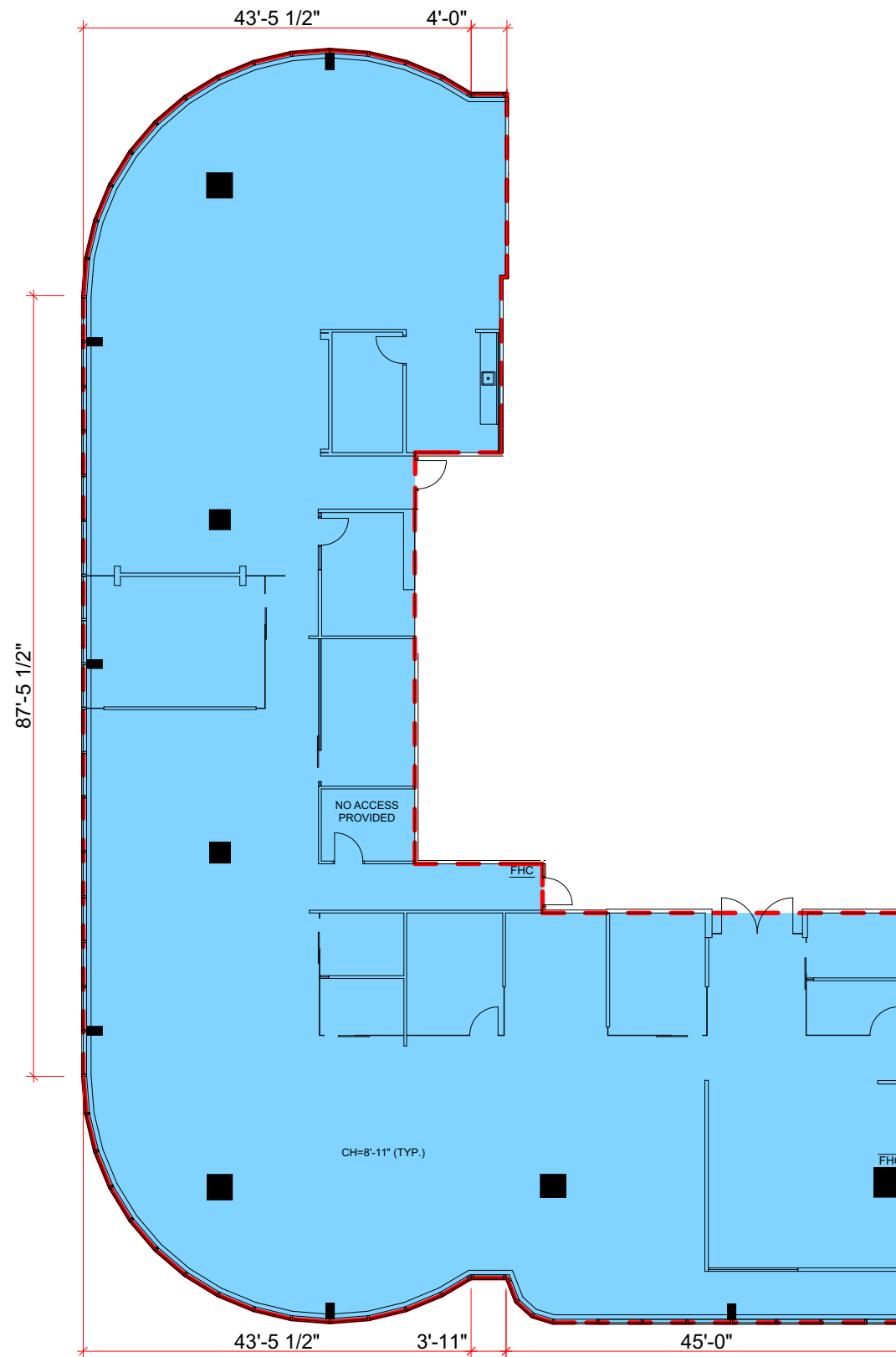
USEABLE AREA = 7,924.30 SQ.FT

FLOOR COMMON AREA = 2,466.47 SQ.FT

FLOOR R/U RATIO = 1.1221899 SQ.FT

LEASABLE (RENTABLE) AREA = 8,892.57 SQ.FT

BOMA STANDARD 1980 OFFICE CALCULATION



Area Certificate
Issued: January 8, 2021

Toronto Eaton Centre
250 Yonge Street
Toronto, Ontario

UNIT #: 1801
CIVIC #: N/A



We hereby certify to the best of our knowledge that the leaseable area for the CRU described herein is as indicated.

Signature: *[Handwritten Signature]*

Measured Date: 21/12/2020

Prepared Date: 08/01/2021

